

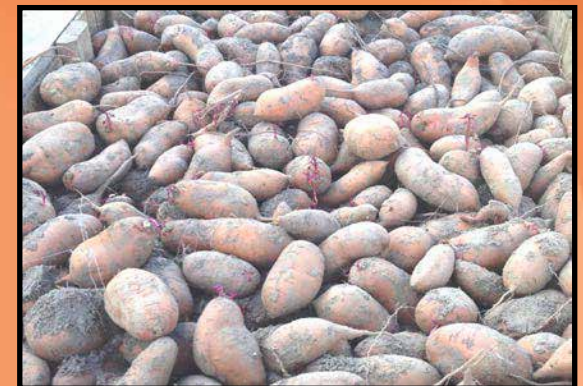
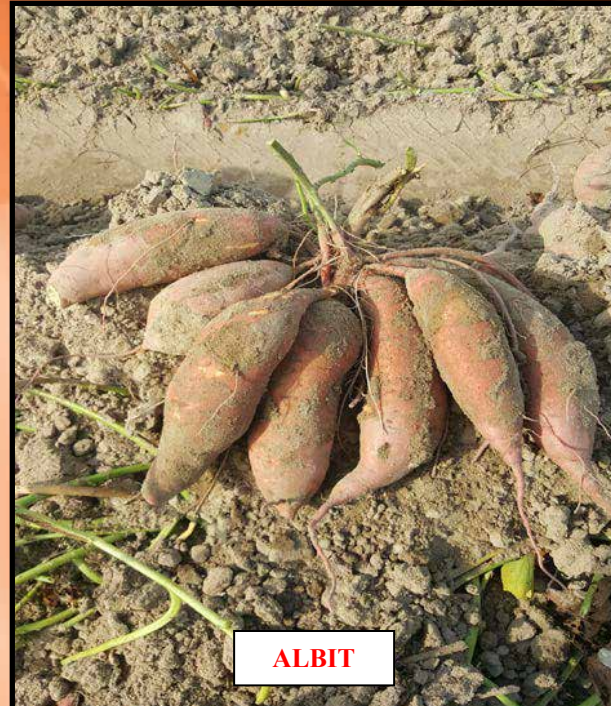
Albit Enhances Tuber Initiation & Set

Albit & Healthy Potato Tubers



ALBIT®

**Albit is a liquid paste
used to improve plant
growth and stress
tolerance on sweet
potatoes and seedlings.**



Able Ag Solutions
Nature & Technology for Higher Yields
pwbooyesen1@gmail.com
850-766-6489
www.ableagsolutions.com

***Nature & Technology
for Higher Yields***

Benefits of Spraying Albit on Seedbeds & Adding Through Dripper Tape...

- Stimulates sprouting
- Accelerates Root Development
- Promotes Health & Vigor
- Increases Stress Tolerance
- Reduces Transplant Stress
- Enhances Fertilizer Uptake

Stimulation of Root Development after Treatment



Albit Technology

A natural microbial biopolymer poly- β -hydroxybutyric acid (PHB)

Albit's Natural Elements Include...

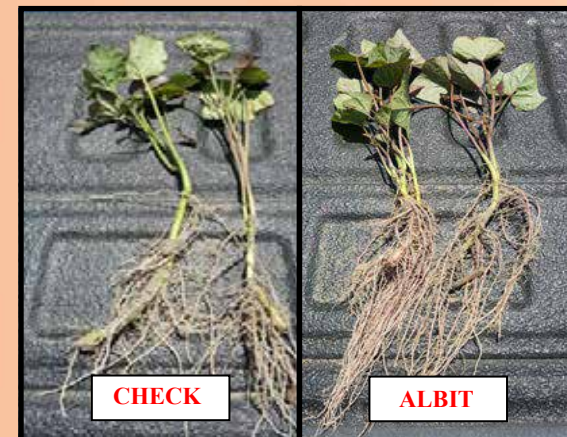
A hydrolyzed biomass of soil bacteria with

- Bacillus megaterium*
- Pseudomonas aureofaciens*

Amended with plant nutrients

- ~Nitrogen
- ~Phosphorus
- ~Potassium
- ~Magnesium
- ~Sulphur

Albit is an innovative product of biological origin for the protection of agricultural plants against natural and chemical stresses.



Benefits of Adding Albit to Sweet Potato Transplant water...

- Reduces Transplant Stress on Potato Sprouts
- Generates Strong Root System for Plant Health and Tuber Production
- Stimulates Root Development & Mineral Absorption
- Enhances Tuber Initiation & Set
- Promotes Vine Growth & Vigor
- Improves Stress Tolerance
- Less "Balling" of Tubers
- Increases Yield